



CILY / CILY SLIM / LATTINA SPARE PARTS CATALOGUE

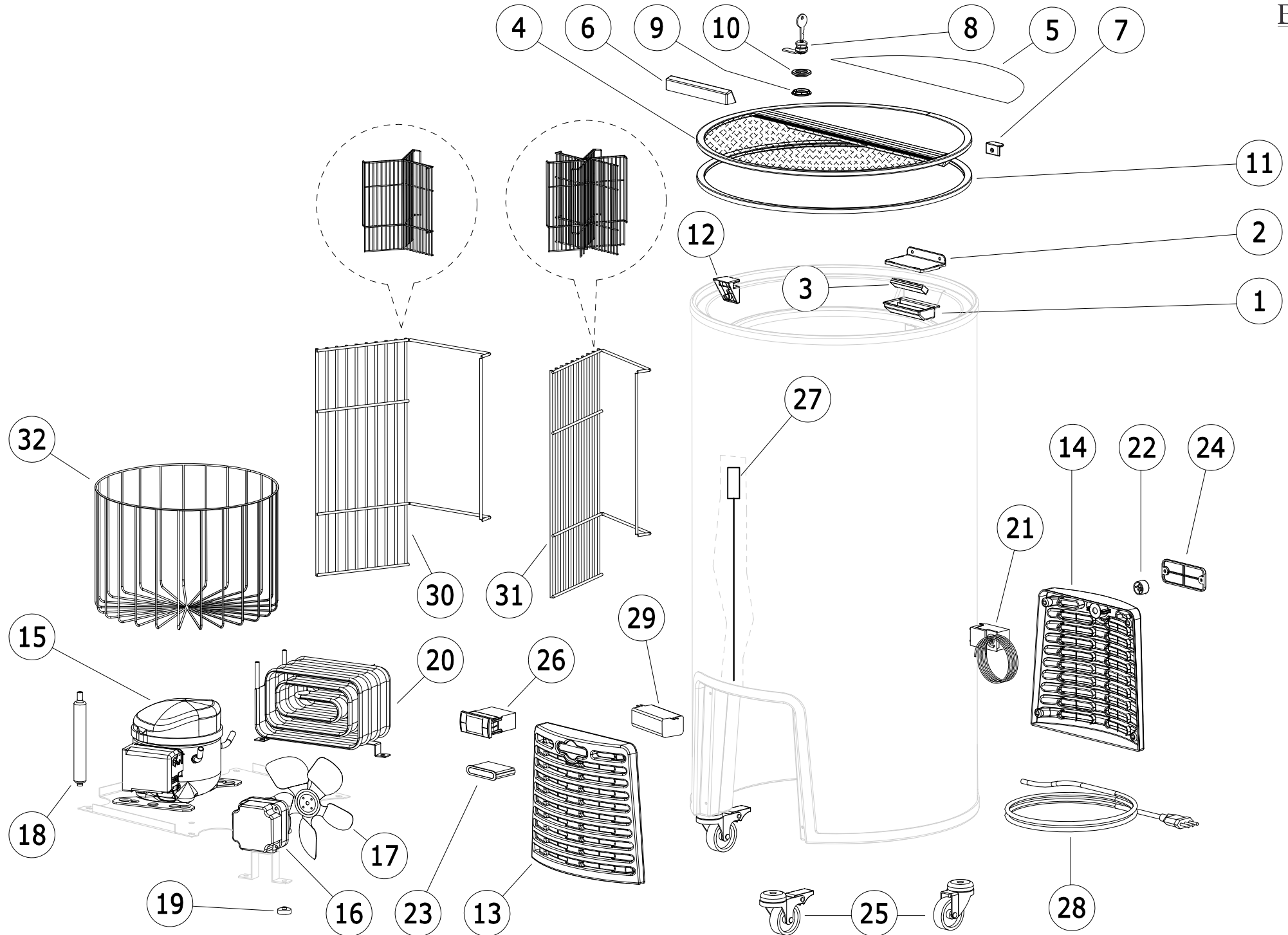
**T01A - SPARE PARTS / RICAMBI / PIÈCES DÉTACHÉE / ERSATZTEILE / REPUESTOS**

**3**

---

TAB 01A - SPARE PARTS / RICAMBI / PIÈCES DÉTACHÉE / ERSATZTEILE / REPUESTOS

From 4 To 28



Ref.	Code	Description	Characteristic Note	Q.ty x Pack Statement
1	50501031	LAMPHOLDER		
2	50496031	LAMPHOLDER COVER		
3	54849000	LAMP L.70 2W 6500K	REPLACES 1W LED LAMP ALSO	
4	44246046	LID Ø576	I9H00722	
	44246048	LID Ø576	I9H00738	
	44261000	LID Ø576	I9H00105; I9H00870; I9H01046	
	44422000	LID Ø576	I9H00231; I9H00236; I9H00337; I9H00504; I9H00506; I9H00574; I9H00628; I9H00629; I9H00630; I9H00815	
	44549000	LID Ø576	I9H00237; I9H00505	
	44559000	LID Ø576	I9H00238; I9H00626	
	46511000	LID Ø576	I9H00338	
	50122035	LID Ø429	I9H00726	
	50128000	LID Ø429	I9H00724	
	51016000	LID Ø576	I9H00695	
	51041000	LID Ø429	I9H00699	
	51064000	LID Ø576	I9H00696	
	51074000	LID Ø429	I9H01087	
	51188000	LID Ø576	I9H00697	
	51193000	LID Ø429	I9H00725	
	51228000	LID Ø429	I9H00700	
	51234000	LID Ø429	I9H00698	
	51350000	LID Ø429	I9H00723	
	51472031	LID Ø429	I9H00735	
	51556000	LID Ø576	I9H00627	
	52289000	LID Ø576	I9H00814	
	52642000	LID Ø429	I9H00809	
	52962000	LID Ø429	I9H00891	
	53004000	LID Ø576	I9H00893	
	53013000	LID Ø576	I9H00894	
	53078000	LID Ø576	I9H00895	
	53768031	LID Ø429	I9H00961	
	55365000	LID Ø576	I9H01083; I9H01314	
56231000	LID Ø576	I9H01086		
56432000	LID Ø429	I9H01135		
56463000	LID Ø429	I9H01134; I9H01269; I9H01375; I9H01376; I9H01412		

Ref.	Code	Description	Characteristic	Note	Q.ty x Pack	Statement
4	56480000	LID Ø429		I9H01088		
	56630000	LID Ø576		I9H01142; I9H01178		
	56651000	LID Ø576		I9H01156		
	56916000	LID Ø429		I9H01143		
	56974000	LID Ø429		I9H01172		
	56985000	LID Ø429		I9H01173		
	57139000	LID Ø429		I9H01179		
	58213000	LID Ø576		I9H01291; I9H01315; I9H01377; I9H01413; I9H01514		
	58410000	LID Ø429		I9H01170		
	58433032	LID Ø576		I9H01169		
	58433034	LID Ø576		I9H01541		
	58478000	LID Ø429		I9H01287		
	58518000	LID Ø576		I9H01288		
	58888000	LID Ø429		I9H01346		
	59031000	LID Ø576		I9H01347		
	59122000	LID Ø576		I9H01373		
	59264000	LID Ø576		I9H01268		
	59842000	LID Ø429		I9H01433		
	60184000	LID Ø429		I9H01431		
	60193000	LID Ø576		I9H01432		
	60974000	LID Ø576		I9H01515		
	61229000	LID Ø576		I9H01536		
	50721000	LID Ø576		I9H00575		
	52248032	LID Ø429		I9H00808		
	57488000	LID Ø576		I9H01222		
	61375000	LID Ø429		I9H01221		
	45733000	LID Ø576		I9H00314		
	44462000	LID Ø576		I9H00233; I9H00624; I9H00892		
	44487000	LID Ø576		I9H00232		
	10250529	HALF LID Ø381		I9800018; I9800092		
5	56180000	DECAL STICKER		I9H01087		
	56436000	DECAL STICKER		I9H01135		
	56460000	DECAL STICKER		I9H01134; I9H01269; I9H01375; I9H01376; I9H01412		
	56482000	DECAL STICKER		I9H01088		

Ref.	Code	Description	Characteristic	Note	Q.ty x Pack	Statement
5	56918033	DECAL STICKER		I9H01143		
	56977033	DECAL STICKER		I9H01172		
	56986033	DECAL STICKER		I9H01173		
	57140033	DECAL STICKER		I9H01179		
	58409033	DECAL STICKER		I9H01170		
	58476033	DECAL STICKER		I9H01287		
	58889033	DECAL STICKER		I9H01346		
	59838033	DECAL STICKER		I9H01433		
	60183033	DECAL STICKER		I9H01431		
6	I3303102	HANDLE				
7	I0431241	LID STOPPER BRACKET				
8	56119000	LOCKER				
9	55348000	LOW. BUSH RAL9005				
10	54702000	UPP. BUSH RAL9005				
11	50131031	GASKET Ø429 GREY				
	50131032	GASKET Ø429 BLACK				
	50131033	GASKET Ø429 WHITE				
	50131034	GASKET Ø576 WHITE				
	50131035	GASKET Ø576 GREY				
	50131036	GASKET Ø576 BLACK				
	I3305453	GASKET		I9800018; I9800092		
12	54714000	INSERT RAL9005				
13	44238031	FRONT GRID 306X222 WHITE		I9H00105; I9H00232; I9H00233; I9H00314; I9H00624; I9H00695; I9H00696; I9H00697; I9H00722; I9H00870; I9H00892; I9H01046		
	44238032	FRONT GRID 306X222 GREY		I9H00231; I9H00236; I9H00337; I9H00338; I9H00504; I9H00506; I9H00574; I9H00575; I9H00628; I9H00629; I9H00630; I9H00815; I9H00895		
	44238033	FRONT GRID 306X222 BLACK		I9H00237; I9H00238; I9H00341; I9H00503; I9H00505; I9H00573; I9H00576; I9H00625; I9H00626; I9H00627; I9H00738; I9H00814; I9H00893; I9H00894		
	44238034	FRONT GRID 306X222 GREY		I9H01142; I9H01178; I9H01222; I9H01347; I9H01373; I9H01536		
	44238035	FRONT GRID 306X222 BLACK		I9H01086; I9H01156; I9H01268; I9H01291; I9H01315; I9H01377; I9H01413; I9H01432; I9H01514		
	50056031	FRONT GRID 237X222 GREY		I9H00724; I9H00725		
	50056033	FRONT GRID 237X222 BLACK		I9H00699; I9H00723; I9H00726; I9H00735; I9H00808; I9H00961		
	50056035	FRONT GRID 237X222 WHITE		I9H00698; I9H00700; I9H00809; I9H00891		
	53833031	FRONT GRID 306X222 WHITE		I9H01083; I9H01169; I9H01288; I9H01314; I9H01515; I9H01541		
	53833033	FRONT GRID 237X222 WHITE		I9H01170; I9H01287		
	53833037	FRONT GRID 237X222 GREY		I9H01179; I9H01346; I9H01221		

Ref.	Code	Description	Characteristic	Note	Q.ty x Pack	Statement
13	53833039	FRONT GRID 237X222 BLACK		I9H01087; I9H01088; I9H01134; I9H01135; I9H01143; I9H01172; I9H01173; I9H01269; I9H01375; I9H01376; I9H01412; I9H01431; I9H01433		
14	44240031	REAR GRID 306X222 WHITE		I9H00105; I9H00232; I9H00233; I9H00314; I9H00624; I9H00695; I9H00696; I9H00697; I9H00722; I9H00870; I9H00892; I9H01046		
	44240032	REAR GRID 306X222 GREY		I9H00231; I9H00236; I9H00337; I9H00338; I9H00504; I9H00506; I9H00574; I9H00575; I9H00628; I9H00629; I9H00630; I9H00815; I9H00895		
	44240033	REAR GRID 306X222 BLACK		I9H00237; I9H00238; I9H00341; I9H00503; I9H00505; I9H00573; I9H00576; I9H00625; I9H00626; I9H00627; I9H00738; I9H00814; I9H00893; I9H00894		
	50056032	REAR GRID 237X222 GREY		I9H00724; I9H00725		
	50056034	REAR GRID 237X222 BLACK		I9H00699; I9H00723; I9H00726; I9H00735; I9H00808; I9H00961		
	50056036	REAR GRID 237X222 WHITE		I9H00700; I9H00698; I9H00809; I9H00891		
	53833032	REAR GRID 306X222 WHITE		I9H01083; I9H01169; I9H01288; I9H01314; I9H01515; I9H01541		
	53833034	REAR GRID 237X222 WHITE		I9H01170; I9H01287		
	53833035	REAR GRID 306X222 GREY		I9H01142; I9H01178; I9H01222; I9H01347; I9H01373; I9H01536		
	53833036	REAR GRID 306X222 BLACK		I9H01086; I9H01156; I9H01268; I9H01291; I9H01315; I9H01377; I9H01413; I9H01432; I9H01514		
	53833038	REAR GRID 237X222 GREY		I9H01179; I9H01346; I9H01221		
	53833040	REAR GRID 237X222 BLACK		I9H01087; I9H01088; I9H01134; I9H01135; I9H01143; I9H01172; I9H01173; I9H01269; I9H01375; I9H01376; I9H01412; I9H01431; I9H01433		
	15	21848055	COMPRESSOR		XXX3121X	
41768031		COMPRESSOR		XX1117X		
I0210943		COMPRESSOR		XX2X1121X		
41768035		COMPRESSOR		XX1118XX		
I0210989		COMPRESSOR		I9800018; I9800092		
16	42560031	FANMOTOR 12W 1500RPM				
	I0220093	MOTOR 14/8W 115V/50-60HZ				
17	I0407021	FAN BLADE Ø200 34°		FOR MOTOR I0220093		
18	44764000	DEHYDRATE FILTER 44764000				
	I0145086	DEHYDRATE FILTER I0145086		I9800018; I9800092		
19	I0403007	DAMPER RUBBER BLACK				
20	I0130108	SPYRAL CONDENSER 118X210X125				
21	I0225190	THERMOSTAT				
	I0225192	THERMOSTAT		I9H00698; I9H00699; I9H00700; I9H00723; I9H00724; I9H00725; I9H00726; I9H00735; I9H00808; I9H00809; I9H00891; I9H00961		
	I0225199	THERMOSTAT		I9800018; I9800092		
22	I0413010	KNOB GREY		WITH THERMOSTAT I0225190; I0225192		
23	I0406005	THERMOMETER BLACK				
	I0406040	THERMOMETER WHITE				

Ref.	Code	Description	Characteristic Note	Q.ty x Pack Statement
24	54303031	CORK GREY		
	54303032	CORK WHITE		
	54303033	CORK BLACK		
25	I0402018	WHEEL Ø50		
	I0402019	WHEEL WITH BRAKE Ø50		
	I0402069	WHEEL Ø35	I9800018; I9800092	
26	50025031	CONTROLLER		
27	50082031	NTC PROBE L.1000		
28	I3300524	SUPPLY CABLE L.2500 SWITZERLAND PLUG		
	I3301531	SUPPLY CABLE L.4000 SCHUKO PLUG		
	I3302607	SUPPLY CABLE L.4000 ISRAEL PLUG		
	I3303163	SUPPLY CABLE L.4200 SCHUKO PLUG		
	I3306036	SUPPLY CABLE L.2500 U.S.A. PLUG		
	I3306470	SUPPLY CABLE L.2500 SCHUKO PLUG		
	I3306480	SUPPLY CABLE L.2500 ITALIAN PLUG		
	I3306486	SUPPLY CABLE L.2500 UK PLUG		
29	I3305738	POWER SUPPLIER 12W 24V		
30	50489000	WELL DIVIDER (3 SECTORS) 342X365 WHITE		
	50597000	WELL DIVIDER (3 SECTORS) 237X365 WHITE		
31	50490000	WELL DIVIDER (6 SECTORS) 229X365 WHITE		
	50598000	WELL DIVIDER (6 SECTORS) 159X365 WHITE		
32	49659000	CHEST WHITE		



Ref.	Code	Description	Characteristic Note	Q.ty x Pack Statement
1	50501031	PORTALAMPADA		
2	50496031	COPERTURA PORTALAMPADA		
3	54849000	LAMPADA LED L.70 2W 6500K	SOSTITUISCE ANCHE LA LAMPADA LED DA 1W	
4	44246046	COPERCHIO Ø576	I9H00722	
	44246048	COPERCHIO Ø576	I9H00738	
	44261000	COPERCHIO Ø576	I9H00105; I9H00870; I9H01046	
	44422000	COPERCHIO Ø576	I9H00231; I9H00236; I9H00337; I9H00504; I9H00506; I9H00574; I9H00628; I9H00629; I9H00630; I9H00815	
	44549000	COPERCHIO Ø576	I9H00237; I9H00505	
	44559000	COPERCHIO Ø576	I9H00238; I9H00626	
	46511000	COPERCHIO Ø576	I9H00338	
	50122035	COPERCHIO Ø429	I9H00726	
	50128000	COPERCHIO Ø429	I9H00724	
	51016000	COPERCHIO Ø576	I9H00695	
	51041000	COPERCHIO Ø429	I9H00699	
	51064000	COPERCHIO Ø576	I9H00696	
	51074000	COPERCHIO Ø429	I9H01087	
	51188000	COPERCHIO Ø576	I9H00697	
	51193000	COPERCHIO Ø429	I9H00725	
	51228000	COPERCHIO Ø429	I9H00700	
	51234000	COPERCHIO Ø429	I9H00698	
	51350000	COPERCHIO Ø429	I9H00723	
	51472031	COPERCHIO Ø429	I9H00735	
	51556000	COPERCHIO Ø576	I9H00627	
	52289000	COPERCHIO Ø576	I9H00814	
	52642000	COPERCHIO Ø429	I9H00809	
	52962000	COPERCHIO Ø429	I9H00891	
	53004000	COPERCHIO Ø576	I9H00893	
	53013000	COPERCHIO Ø576	I9H00894	
	53078000	COPERCHIO Ø576	I9H00895	
	53768031	COPERCHIO Ø429	I9H00961	
	55365000	COPERCHIO Ø576	I9H01083; I9H01314	
	56231000	COPERCHIO Ø576	I9H01086	
	56432000	COPERCHIO Ø429	I9H01135	
	56463000	COPERCHIO Ø429	I9H01134; I9H01269; I9H01375; I9H01376; I9H01412	

Ref.	Code	Description	Characteristic Note	Q.ty x Pack Statement
4	56480000	COPERCHIO Ø429	I9H01088	
	56630000	COPERCHIO Ø576	I9H01142; I9H01178	
	56651000	COPERCHIO Ø576	I9H01156	
	56916000	COPERCHIO Ø429	I9H01143	
	56974000	COPERCHIO Ø429	I9H01172	
	56985000	COPERCHIO Ø429	I9H01173	
	57139000	COPERCHIO Ø429	I9H01179	
	58213000	COPERCHIO Ø576	I9H01291; I9H01315; I9H01377; I9H01413; I9H01514	
	58410000	COPERCHIO Ø429	I9H01170	
	58433032	COPERCHIO Ø576	I9H01169	
	58433034	COPERCHIO Ø576	I9H01541	
	58478000	COPERCHIO Ø429	I9H01287	
	58518000	COPERCHIO Ø576	I9H01288	
	58888000	COPERCHIO Ø429	I9H01346	
	59031000	COPERCHIO Ø576	I9H01347	
	59122000	COPERCHIO Ø576	I9H01373	
	59264000	COPERCHIO Ø576	I9H01268	
	59842000	COPERCHIO Ø429	I9H01433	
	60184000	COPERCHIO Ø429	I9H01431	
	60193000	COPERCHIO Ø576	I9H01432	
	60974000	COPERCHIO Ø576	I9H01515	
	61229000	COPERCHIO Ø576	I9H01536	
	50721000	COPERCHIO Ø576	I9H00575	
	52248032	COPERCHIO Ø429	I9H00808	
	57488000	COPERCHIO Ø576	I9H01222	
	61375000	COPERCHIO Ø429	I9H01221	
	45733000	COPERCHIO Ø576	I9H00314	
	44462000	COPERCHIO Ø576	I9H00233; I9H00624; I9H00892	
	44487000	COPERCHIO Ø576	I9H00232	
	10250529	SEMI-COPERCHIO Ø381	I9800018; I9800092	
5	56180000	DECALCOMANIA	I9H01087	
	56436000	DECALCOMANIA	I9H01135	
	56460000	DECALCOMANIA	I9H01134; I9H01269; I9H01375; I9H01376; I9H01412	
	56482000	DECALCOMANIA	I9H01088	

Ref.	Code	Description	Characteristic	Note	Q.ty x Pack Statement
5	56918033	DECALCOMANIA		I9H01143	
	56977033	DECALCOMANIA		I9H01172	
	56986033	DECALCOMANIA		I9H01173	
	57140033	DECALCOMANIA		I9H01179	
	58409033	DECALCOMANIA		I9H01170	
	58476033	DECALCOMANIA		I9H01287	
	58889033	DECALCOMANIA		I9H01346	
	59838033	DECALCOMANIA		I9H01433	
	60183033	DECALCOMANIA		I9H01431	
6	I3303102	MANIGLIA			
7	I0431241	STAFFA FERMA COPERCHIO			
8	56119000	SERRATURA			
9	55348000	BOCCOLA INF. RAL9005			
10	54702000	BOCCOLA SUP. RAL9005			
11	50131031	GUARNIZIONE Ø429 GRIGIO			
	50131032	GUARNIZIONE Ø429 NERO			
	50131033	GUARNIZIONE Ø429 BIANCO			
	50131034	GUARNIZIONE Ø576 BIANCO			
	50131035	GUARNIZIONE Ø576 GRIGIO			
	50131036	GUARNIZIONE Ø576 NERO			
	I3305453	GUARNIZIONE		I9800018; I9800092	
12	54714000	INSERTO RAL9005			
13	44238031	GRIGLIA ANT. 306X222 BIANCO		I9H00105; I9H00232; I9H00233; I9H00314; I9H00624; I9H00695; I9H00696; I9H00697; I9H00722; I9H00870; I9H00892; I9H01046	
	44238032	GRIGLIA ANT. 306X222 GRIGIO		I9H00231; I9H00236; I9H00337; I9H00338; I9H00504; I9H00506; I9H00574; I9H00575; I9H00628; I9H00629; I9H00630; I9H00815; I9H00895	
	44238033	GRIGLIA ANT. 306X222 NERO		I9H00237; I9H00238; I9H00341; I9H00503; I9H00505; I9H00573; I9H00576; I9H00625; I9H00626; I9H00627; I9H00738; I9H00814; I9H00893; I9H00894	
	44238034	GRIGLIA ANT. 306X222 GRIGIO		I9H01142; I9H01178; I9H01222; I9H01347; I9H01373; I9H01536	
	44238035	GRIGLIA ANT. 306X222 NERO		I9H01086; I9H01156; I9H01268; I9H01291; I9H01315; I9H01377; I9H01413; I9H01432; I9H01514	
	50056031	GRIGLIA ANT. 237X222 GRIGIO		I9H00724; I9H00725	
	50056033	GRIGLIA ANT. 237X222 NERO		I9H00699; I9H00723; I9H00726; I9H00735; I9H00808; I9H00961	
	50056035	GRIGLIA ANT. 237X222 BIANCO		I9H00698; I9H00700; I9H00809; I9H00891	
	53833031	GRIGLIA ANT. 306X222 BIANCO		I9H01083; I9H01169; I9H01288; I9H01314; I9H01515; I9H01541	
	53833033	GRIGLIA ANT. 237X222 BIANCO		I9H01170; I9H01287	
	53833037	GRIGLIA ANT. 237X222 GRIGIO		I9H01179; I9H01346; I9H01221	

Ref.	Code	Description	Characteristic Note	Q.ty x Pack Statement
13	53833039	GRIGLIA ANT. 237X222 NERO	I9H01087; I9H01088; I9H01134; I9H01135; I9H01143; I9H01172; I9H01173; I9H01269; I9H01375; I9H01376; I9H01412; I9H01431; I9H01433	
14	44240031	GRIGLIA POST. 306X222 BIANCO	I9H00105; I9H00232; I9H00233; I9H00314; I9H00624; I9H00695; I9H00696; I9H00697; I9H00722; I9H00870; I9H00892; I9H01046	
	44240032	GRIGLIA POST. 306X222 GRIGIO	I9H00231; I9H00236; I9H00337; I9H00338; I9H00504; I9H00506; I9H00574; I9H00575; I9H00628; I9H00629; I9H00630; I9H00815; I9H00895	
	44240033	GRIGLIA POST. 306X222 NERO	I9H00237; I9H00238; I9H00341; I9H00503; I9H00505; I9H00573; I9H00576; I9H00625; I9H00626; I9H00627; I9H00738; I9H00814; I9H00893; I9H00894	
	50056032	GRIGLIA POST. 237X222 GRIGIO	I9H00724; I9H00725	
	50056034	GRIGLIA POST. 237X222 NERO	I9H00699; I9H00723; I9H00726; I9H00735; I9H00808; I9H00961	
	50056036	GRIGLIA POST. 237X222 BIANCO	I9H00700; I9H00698; I9H00809; I9H00891	
	53833032	GRIGLIA POST. 306X222 BIANCO	I9H01083; I9H01169; I9H01288; I9H01314; I9H01515; I9H01541	
	53833034	GRIGLIA POST. 237X222 BIANCO	I9H01170; I9H01287	
	53833035	GRIGLIA POST. 306X222 GRIGIO	I9H01142; I9H01178; I9H01222; I9H01347; I9H01373; I9H01536	
	53833036	GRIGLIA POST. 306X222 NERO	I9H01086; I9H01156; I9H01268; I9H01291; I9H01315; I9H01377; I9H01413; I9H01432; I9H01514	
	53833038	GRIGLIA POST. 237X222 GRIGIO	I9H01179; I9H01346; I9H01221	
	53833040	GRIGLIA POST. 237X222 NERO	I9H01087; I9H01088; I9H01134; I9H01135; I9H01143; I9H01172; I9H01173; I9H01269; I9H01375; I9H01376; I9H01412; I9H01431; I9H01433	
15	21848055	COMPRESSORE	XXX3121X	
	41768031	COMPRESSORE	XX1117X	
	I0210943	COMPRESSORE	XX2X1121X	
	41768035	COMPRESSORE	XX1118XX	
	I0210989	COMPRESSORE	I9800018; I9800092	
16	42560031	MOTOVENTILATORE 12W 1500RPM		
	I0220093	MOTORE 14/8W 115V/50-60HZ		
17	I0407021	VENTOLA Ø200 34°	PER MOTORE I0220093	
18	44764000	FILTRO DEIDRATATORE 44764000		
	I0145086	FILTRO DEIDRATATORE I0145086	I9800018; I9800092	
19	I0403007	GOMMINO AMMORTIZZATORE NERO		
20	I0130108	CONDENSATORE AVVOLTO 118X210X125		
21	I0225190	TERMOSTATO		
	I0225192	TERMOSTATO	I9H00698; I9H00699; I9H00700; I9H00723; I9H00724; I9H00725; I9H00726; I9H00735; I9H00808; I9H00809; I9H00891; I9H00961	
	I0225199	TERMOSTATO	I9800018; I9800092	
22	I0413010	POMELLO GRIGIO	CON TERMOSTATO I0225190; I0225192	
23	I0406005	TERMOMETRO NERO		
	I0406040	TERMOMETRO BIANCO		

Ref.	Code	Description	Characteristic Note	Q.ty x Pack Statement
24	54303031	TAPPO GRIGIO		
	54303032	TAPPO BIANCO		
	54303033	TAPPO NERO		
25	I0402018	RUOTA Ø50		
	I0402019	RUOTA CON FRENO Ø50		
	I0402069	RUOTA Ø35	I9800018; I9800092	
26	50025031	CONTROLLORE		
27	50082031	SONDA NTC L.1000		
28	I3300524	CAVO ALIMENTAZIONE L.2500 SPINA SVIZZERA		
	I3301531	CAVO ALIMENTAZIONE L.4000 SPINA SCHUKO		
	I3302607	CAVO ALIMENTAZIONE L.4000 SPINA ISRAELE		
	I3303163	CAVO ALIMENTAZIONE L.4200 SPINA SCHUKO		
	I3306036	CAVO ALIMENTAZIONE L.2500 SPINA U.S.A.		
	I3306470	CAVO ALIMENTAZIONE L.2500 SPINA SCHUKO		
	I3306480	CAVO ALIMENTAZIONE L.2500 SPINA ITALIA		
	I3306486	CAVO ALIMENTAZIONE L.2500 SPINA UK		
29	I3305738	ALIMENTATORE 12W 24V		
30	50489000	DIVISORIO VASCA (3 SETTORI) 342X365 BIANCO		
	50597000	DIVISORIO VASCA (3 SETTORI) 237X365 BIANCO		
31	50490000	DIVISORIO VASCA (6 SETTORI) 229X365 BIANCO		
	50598000	DIVISORIO VASCA (6 SETTORI) 159X365 BIANCO		
32	49659000	CESTO BIANCO		

Ref.	Code	Description	Characteristic Note	Q.ty x Pack Statement
1	50501031	SUPPORT LAMPE		
2	50496031	COUVERTURE SUPPORT LAMPE		
3	54849000	LAMPE L.70 2W 6500K	REPLACE AUSSI LE LAMPE LED 1W	
4	44246046	COUVERCLE Ø576	I9H00722	
	44246048	COUVERCLE Ø576	I9H00738	
	44261000	COUVERCLE Ø576	I9H00105; I9H00870; I9H01046	
	44422000	COUVERCLE Ø576	I9H00231; I9H00236; I9H00337; I9H00504; I9H00506; I9H00574; I9H00628; I9H00629; I9H00630; I9H00815	
	44549000	COUVERCLE Ø576	I9H00237; I9H00505	
	44559000	COUVERCLE Ø576	I9H00238; I9H00626	
	46511000	COUVERCLE Ø576	I9H00338	
	50122035	COUVERCLE Ø429	I9H00726	
	50128000	COUVERCLE Ø429	I9H00724	
	51016000	COUVERCLE Ø576	I9H00695	
	51041000	COUVERCLE Ø429	I9H00699	
	51064000	COUVERCLE Ø576	I9H00696	
	51074000	COUVERCLE Ø429	I9H01087	
	51188000	COUVERCLE Ø576	I9H00697	
	51193000	COUVERCLE Ø429	I9H00725	
	51228000	COUVERCLE Ø429	I9H00700	
	51234000	COUVERCLE Ø429	I9H00698	
	51350000	COUVERCLE Ø429	I9H00723	
	51472031	COUVERCLE Ø429	I9H00735	
	51556000	COUVERCLE Ø576	I9H00627	
	52289000	COUVERCLE Ø576	I9H00814	
	52642000	COUVERCLE Ø429	I9H00809	
	52962000	COUVERCLE Ø429	I9H00891	
	53004000	COUVERCLE Ø576	I9H00893	
	53013000	COUVERCLE Ø576	I9H00894	
	53078000	COUVERCLE Ø576	I9H00895	
	53768031	COUVERCLE Ø429	I9H00961	
	55365000	COUVERCLE Ø576	I9H01083; I9H01314	
	56231000	COUVERCLE Ø576	I9H01086	
	56432000	COUVERCLE Ø429	I9H01135	
	56463000	COUVERCLE Ø429	I9H01134; I9H01269; I9H01375; I9H01376; I9H01412	

Ref.	Code	Description	Characteristic Note	Q.ty x Pack Statement
41	56480000	COUVERCLE Ø429	I9H01088	
	56630000	COUVERCLE Ø576	I9H01142; I9H01178	
	56651000	COUVERCLE Ø576	I9H01156	
	56916000	COUVERCLE Ø429	I9H01143	
	56974000	COUVERCLE Ø429	I9H01172	
	56985000	COUVERCLE Ø429	I9H01173	
	57139000	COUVERCLE Ø429	I9H01179	
	58213000	COUVERCLE Ø576	I9H01291; I9H01315; I9H01377; I9H01413; I9H01514	
	58410000	COUVERCLE Ø429	I9H01170	
	58433032	COUVERCLE Ø576	I9H01169	
	58433034	COUVERCLE Ø576	I9H01541	
	58478000	COUVERCLE Ø429	I9H01287	
	58518000	COUVERCLE Ø576	I9H01288	
	58888000	COUVERCLE Ø429	I9H01346	
	59031000	COUVERCLE Ø576	I9H01347	
	59122000	COUVERCLE Ø576	I9H01373	
	59264000	COUVERCLE Ø576	I9H01268	
	59842000	COUVERCLE Ø429	I9H01433	
	60184000	COUVERCLE Ø429	I9H01431	
	60193000	COUVERCLE Ø576	I9H01432	
	60974000	COUVERCLE Ø576	I9H01515	
	61229000	COUVERCLE Ø576	I9H01536	
	50721000	COUVERCLE Ø576	I9H00575	
	52248032	COUVERCLE Ø429	I9H00808	
	57488000	COUVERCLE Ø576	I9H01222	
	61375000	COUVERCLE Ø429	I9H01221	
	45733000	COUVERCLE Ø576	I9H00314	
	44462000	COUVERCLE Ø576	I9H00233; I9H00624; I9H00892	
	44487000	COUVERCLE Ø576	I9H00232	
	10250529	SEMI-COUVERCLE Ø381	I9800018; I9800092	
5	56180000	DECAL	I9H01087	
	56436000	DECAL	I9H01135	
	56460000	DECAL	I9H01134; I9H01269; I9H01375; I9H01376; I9H01412	
	56482000	DECAL	I9H01088	

Ref.	Code	Description	Characteristic	Note	Q.ty x Pack	Statement
5	56918033	DECAL		I9H01143		
	56977033	DECAL		I9H01172		
	56986033	DECAL		I9H01173		
	57140033	DECAL		I9H01179		
	58409033	DECAL		I9H01170		
	58476033	DECAL		I9H01287		
	58889033	DECAL		I9H01346		
	59838033	DECAL		I9H01433		
	60183033	DECAL		I9H01431		
6	I3303102	POIGNEE				
7	I0431241	BUTEE BLOC COUVERCLE				
8	56119000	SERRURE				
9	55348000	BOUCHON INF. RAL9005				
10	54702000	BOUCHON SUP. RAL9005				
11	50131031	JOINT Ø429 GRIS				
	50131032	JOINT Ø429 NOIR				
	50131033	JOINT Ø429 BLANC				
	50131034	JOINT Ø576 BLANC				
	50131035	JOINT Ø576 GRIS				
	50131036	JOINT Ø576 NOIR				
	I3305453	JOINT		I9800018; I9800092		
12	54714000	INSERT RAL9005				
13	44238031	GRILLE ANT. 306X222 BLANC		I9H00105; I9H00232; I9H00233; I9H00314; I9H00624; I9H00695; I9H00696; I9H00697; I9H00722; I9H00870; I9H00892; I9H01046		
	44238032	GRILLE ANT. 306X222 GRIS		I9H00231; I9H00236; I9H00337; I9H00338; I9H00504; I9H00506; I9H00574; I9H00575; I9H00628; I9H00629; I9H00630; I9H00815; I9H00895		
	44238033	GRILLE ANT. 306X222 NOIR		I9H00237; I9H00238; I9H00341; I9H00503; I9H00505; I9H00573; I9H00576; I9H00625; I9H00626; I9H00627; I9H00738; I9H00814; I9H00893; I9H00894		
	44238034	GRILLE ANT. 306X222 GRIS		I9H01142; I9H01178; I9H01222; I9H01347; I9H01373; I9H01536		
	44238035	GRILLE ANT. 306X222 NOIR		I9H01086; I9H01156; I9H01268; I9H01291; I9H01315; I9H01377; I9H01413; I9H01432; I9H01514		
	50056031	GRILLE ANT. 237X222 GRIS		I9H00724; I9H00725		
	50056033	GRILLE ANT. 237X222 NOIR		I9H00699; I9H00723; I9H00726; I9H00735; I9H00808; I9H00961		
	50056035	GRILLE ANT. 237X222 BLANC		I9H00698; I9H00700; I9H00809; I9H00891		
	53833031	GRILLE ANT. 306X222 BLANC		I9H01083; I9H01169; I9H01288; I9H01314; I9H01515; I9H01541		
	53833033	GRILLE ANT. 237X222 BLANC		I9H01170; I9H01287		
	53833037	GRILLE ANT. 237X222 GRIS		I9H01179; I9H01346; I9H01221		



Ref.	Code	Description	Characteristic	Note	Q.ty x Pack	Statement
13	53833039	GRILLE ANT. 237X222 NOIR		I9H01087; I9H01088; I9H01134; I9H01135; I9H01143; I9H01172; I9H01173; I9H01269; I9H01375; I9H01376; I9H01412; I9H01431; I9H01433		
14	44240031	GRILLE POST. 306X222 BLANC		I9H00105; I9H00232; I9H00233; I9H00314; I9H00624; I9H00695; I9H00696; I9H00697; I9H00722; I9H00870; I9H00892; I9H01046		
	44240032	GRILLE POST. 306X222 GRIS		I9H00231; I9H00236; I9H00337; I9H00338; I9H00504; I9H00506; I9H00574; I9H00575; I9H00628; I9H00629; I9H00630; I9H00815; I9H00895		
	44240033	GRILLE POST. 306X222 NOIR		I9H00237; I9H00238; I9H00341; I9H00503; I9H00505; I9H00573; I9H00576; I9H00625; I9H00626; I9H00627; I9H00738; I9H00814; I9H00893; I9H00894		
	50056032	GRILLE POST. 237X222 GRIS		I9H00724; I9H00725		
	50056034	GRILLE POST. 237X222 NOIR		I9H00699; I9H00723; I9H00726; I9H00735; I9H00808; I9H00961		
	50056036	GRILLE POST. 237X222 BLANC		I9H00700; I9H00698; I9H00809; I9H00891		
	53833032	GRILLE POST. 306X222 BLANC		I9H01083; I9H01169; I9H01288; I9H01314; I9H01515; I9H01541		
	53833034	GRILLE POST. 237X222 BLANC		I9H01170; I9H01287		
	53833035	GRILLE POST. 306X222 GRIS		I9H01142; I9H01178; I9H01222; I9H01347; I9H01373; I9H01536		
	53833036	GRILLE POST. 306X222 NOIR		I9H01086; I9H01156; I9H01268; I9H01291; I9H01315; I9H01377; I9H01413; I9H01432; I9H01514		
	53833038	GRILLE POST. 237X222 GRIS		I9H01179; I9H01346; I9H01221		
	53833040	GRILLE POST. 237X222 NOIR		I9H01087; I9H01088; I9H01134; I9H01135; I9H01143; I9H01172; I9H01173; I9H01269; I9H01375; I9H01376; I9H01412; I9H01431; I9H01433		
15	21848055	COMPRESSEUR		XXX3121X		
	41768031	COMPRESSEUR		XX1117X		
	I0210943	COMPRESSEUR		XX2X1121X		
	41768035	COMPRESSEUR		XX1118XX		
	I0210989	COMPRESSEUR		I9800018; I9800092		
16	42560031	MOTOVENTILATEUR 12W 1500RPM				
	I0220093	MOTEUR 14/8W 115V/50-60HZ				
17	I0407021	VENTILATEUR Ø200 34°		POUR MOTEUR I0220093		
18	44764000	FILTRE DESHYDRATEUR 44764000				
	I0145086	FILTRE DESHYDRATEUR I0145086		I9800018; I9800092		
19	I0403007	CAOUTCHOUC AMORTISSEUR NOIR				
20	I0130108	CONDENSATEUR ENROULE 118X210X125				
21	I0225190	THERMOSTAT				
	I0225192	THERMOSTAT		I9H00698; I9H00699; I9H00700; I9H00723; I9H00724; I9H00725; I9H00726; I9H00735; I9H00808; I9H00809; I9H00891; I9H00961		
	I0225199	THERMOSTAT		I9800018; I9800092		
22	I0413010	POIGNEE GRIS		AVEC THERMOSTAT I0225190; I0225192		
23	I0406005	THERMOMÈTRE NOIR				
	I0406040	THERMOMÈTRE BLANC				

Ref.	Code	Description	Characteristic Note	Q.ty x Pack Statement
24	54303031	BOUCHON GRIS		
	54303032	BOUCHON BLANC		
	54303033	BOUCHON NOIR		
25	10402018	ROUE Ø50		
	10402019	ROULETTES AVEC FREIN Ø50		
	10402069	ROUE Ø35	I9800018; I9800092	
26	50025031	REGULATEUR		
27	50082031	SONDE NTC L.1000		
28	I3300524	CABLE ALIMENTACION L.2500 PRISE SUISSE		
	I3301531	CABLE ALIMENTATION L.4000 PRISE SCHUKO		
	I3302607	CABLE ALIMENTATION L.4000 PRISE ISRAEL		
	I3303163	CABLE ALIMENTATION L.4200 PRISE SCHUKO		
	I3306036	CABLE ALIMENTACION L.2500 PRISE U.S.A.		
	I3306470	CABLE ALIMENTACION L.2500 PRISE SCHUKO		
	I3306480	CABLE ALIMENTACION L.2500 PRISE ITALIE		
	I3306486	CABLE ALIMENTACION L.2500 PRISE UK		
29	I3305738	ALIMENTATION 12W 24V		
30	50489000	SEPARATION CUVE (3 SECTEURS 342X365 BLANC		
	50597000	SEPARATION CUVE (3 SECTEURS) 237X365 BLANC		
31	50490000	SEPARATION CUVE (6 SECTEURS) 229X365 BLANC		
	50598000	SEPARATION CUVE (6 SECTEURS) 159X365 BLANC		
32	49659000	PANIER BLANC		

Ref.	Code	Description	Characteristic Note	Q.ty x Pack Statement
1	50501031	LAMPHOLDER		
2	50496031	LAMPHOLDER COVER		
3	54849000	LAMPE L.70 2W 6500K	REPLACES 1W LED LAMP ALSO	
4	44246046	LID Ø576	I9H00722	
	44246048	LID Ø576	I9H00738	
	44261000	LID Ø576	I9H00105; I9H00870; I9H01046	
	44422000	LID Ø576	I9H00231; I9H00236; I9H00337; I9H00504; I9H00506; I9H00574; I9H00628; I9H00629; I9H00630; I9H00815	
	44549000	LID Ø576	I9H00237; I9H00505	
	44559000	LID Ø576	I9H00238; I9H00626	
	46511000	LID Ø576	I9H00338	
	50122035	LID Ø429	I9H00726	
	50128000	LID Ø429	I9H00724	
	51016000	LID Ø576	I9H00695	
	51041000	LID Ø429	I9H00699	
	51064000	LID Ø576	I9H00696	
	51074000	LID Ø429	I9H01087	
	51188000	LID Ø576	I9H00697	
	51193000	LID Ø429	I9H00725	
	51228000	LID Ø429	I9H00700	
	51234000	LID Ø429	I9H00698	
	51350000	LID Ø429	I9H00723	
	51472031	LID Ø429	I9H00735	
	51556000	LID Ø576	I9H00627	
	52289000	LID Ø576	I9H00814	
	52642000	LID Ø429	I9H00809	
	52962000	LID Ø429	I9H00891	
	53004000	LID Ø576	I9H00893	
	53013000	LID Ø576	I9H00894	
	53078000	LID Ø576	I9H00895	
	53768031	LID Ø429	I9H00961	
	55365000	LID Ø576	I9H01083; I9H01314	
	56231000	LID Ø576	I9H01086	
	56432000	LID Ø429	I9H01135	
	56463000	LID Ø429	I9H01134; I9H01269; I9H01375; I9H01376; I9H01412	

Ref.	Code	Description	Characteristic	Note	Q.ty x Pack Statement	
4	56480000	LID Ø429		I9H01088		
	56630000	LID Ø576		I9H01142; I9H01178		
	56651000	LID Ø576		I9H01156		
	56916000	LID Ø429		I9H01143		
	56974000	LID Ø429		I9H01172		
	56985000	LID Ø429		I9H01173		
	57139000	LID Ø429		I9H01179		
	58213000	LID Ø576		I9H01291; I9H01315; I9H01377; I9H01413; I9H01514		
	58410000	LID Ø429		I9H01170		
	58433032	LID Ø576		I9H01169		
	58433034	LID Ø576		I9H01541		
	58478000	LID Ø429		I9H01287		
	58518000	LID Ø576		I9H01288		
	58888000	LID Ø429		I9H01346		
	59031000	LID Ø576		I9H01347		
	59122000	LID Ø576		I9H01373		
	59264000	LID Ø576		I9H01268		
	59842000	LID Ø429		I9H01433		
	60184000	LID Ø429		I9H01431		
	60193000	LID Ø576		I9H01432		
	60974000	LID Ø576		I9H01515		
	61229000	LID Ø576		I9H01536		
	50721000	LID Ø576		I9H00575		
	52248032	LID Ø429		I9H00808		
	57488000	LID Ø576		I9H01222		
	61375000	LID Ø429		I9H01221		
	45733000	LID Ø576		I9H00314		
	44462000	LID Ø576		I9H00233; I9H00624; I9H00892		
	44487000	LID Ø576		I9H00232		
	10250529	HALF LID Ø381		I9800018; I9800092		
	5	56180000	DECAL STICKER		I9H01087	
		56436000	DECAL STICKER		I9H01135	
56460000		DECAL STICKER		I9H01134; I9H01269; I9H01375; I9H01376; I9H01412		
56482000		DECAL STICKER		I9H01088		

Ref.	Code	Description	Characteristic	Note	Q.ty x Pack Statement
5	56918033	DECAL STICKER		I9H01143	
	56977033	DECAL STICKER		I9H01172	
	56986033	DECAL STICKER		I9H01173	
	57140033	DECAL STICKER		I9H01179	
	58409033	DECAL STICKER		I9H01170	
	58476033	DECAL STICKER		I9H01287	
	58889033	DECAL STICKER		I9H01346	
	59838033	DECAL STICKER		I9H01433	
	60183033	DECAL STICKER		I9H01431	
6	I3303102	GRIF			
7	I0431241	LID STOPPER BRACKET			
8	56119000	LOCKER			
9	55348000	LOW. BUSH RAL9005			
10	54702000	UPP. BUSH RAL9005			
11	50131031	GASKET Ø429 GREY			
	50131032	GASKET Ø429 BLACK			
	50131033	GASKET Ø429 WHITE			
	50131034	GASKET Ø576 WHITE			
	50131035	GASKET Ø576 GREY			
	50131036	GASKET Ø576 BLACK			
	I3305453	DICHTUNG		I9800018; I9800092	
12	54714000	INSERT RAL9005			
13	44238031	FRONT GRID 306X222 WHITE		I9H00105; I9H00232; I9H00233; I9H00314; I9H00624; I9H00695; I9H00696; I9H00697; I9H00722; I9H00870; I9H00892; I9H01046	
	44238032	FRONT GRID 306X222 GREY		I9H00231; I9H00236; I9H00337; I9H00338; I9H00504; I9H00506; I9H00574; I9H00575; I9H00628; I9H00629; I9H00630; I9H00815; I9H00895	
	44238033	FRONT GRID 306X222 BLACK		I9H00237; I9H00238; I9H00341; I9H00503; I9H00505; I9H00573; I9H00576; I9H00625; I9H00626; I9H00627; I9H00738; I9H00814; I9H00893; I9H00894	
	44238034	FRONT GRID 306X222 GREY		I9H01142; I9H01178; I9H01222; I9H01347; I9H01373; I9H01536	
	44238035	FRONT GRID 306X222 BLACK		I9H01086; I9H01156; I9H01268; I9H01291; I9H01315; I9H01377; I9H01413; I9H01432; I9H01514	
	50056031	FRONT GRID 237X222 GREY		I9H00724; I9H00725	
	50056033	FRONT GRID 237X222 BLACK		I9H00699; I9H00723; I9H00726; I9H00735; I9H00808; I9H00961	
13	50056035	FRONT GRID 237X222 WHITE		I9H00698; I9H00700; I9H00809; I9H00891	
	53833031	FRONT GRID 306X222 WHITE		I9H01083; I9H01169; I9H01288; I9H01314; I9H01515; I9H01541	
	53833033	FRONT GRID 237X222 WHITE		I9H01170; I9H01287	
	53833037	FRONT GRID 237X222 GREY		I9H01179; I9H01346; I9H01221	

Ref.	Code	Description	Characteristic	Note	Q.ty x Pack Statement
13	53833039	FRONT GRID 237X222 BLACK		I9H01087; I9H01088; I9H01134; I9H01135; I9H01143; I9H01172; I9H01173; I9H01269; I9H01375; I9H01376; I9H01412; I9H01431; I9H01433	
14	44240031	REAR GRID 306X222 WHITE		I9H00105; I9H00232; I9H00233; I9H00314; I9H00624; I9H00695; I9H00696; I9H00697; I9H00722; I9H00870; I9H00892; I9H01046	
	44240032	REAR GRID 306X222 GREY		I9H00231; I9H00236; I9H00337; I9H00338; I9H00504; I9H00506; I9H00574; I9H00575; I9H00628; I9H00629; I9H00630; I9H00815; I9H00895	
	44240033	REAR GRID 306X222 BLACK		I9H00237; I9H00238; I9H00341; I9H00503; I9H00505; I9H00573; I9H00576; I9H00625; I9H00626; I9H00627; I9H00738; I9H00814; I9H00893; I9H00894	
	50056032	REAR GRID 237X222 GREY		I9H00724; I9H00725	
	50056034	REAR GRID 237X222 BLACK		I9H00699; I9H00723; I9H00726; I9H00735; I9H00808; I9H00961	
	50056036	REAR GRID 237X222 WHITE		I9H00700; I9H00698; I9H00809; I9H00891	
	53833032	REAR GRID 306X222 WHITE		I9H01083; I9H01169; I9H01288; I9H01314; I9H01515; I9H01541	
	53833034	REAR GRID 237X222 WHITE		I9H01170; I9H01287	
	53833035	REAR GRID 306X222 GREY		I9H01142; I9H01178; I9H01222; I9H01347; I9H01373; I9H01536	
	53833036	REAR GRID 306X222 BLACK		I9H01086; I9H01156; I9H01268; I9H01291; I9H01315; I9H01377; I9H01413; I9H01432; I9H01514	
	53833038	REAR GRID 237X222 GREY		I9H01179; I9H01346; I9H01221	
	53833040	REAR GRID 237X222 BLACK		I9H01087; I9H01088; I9H01134; I9H01135; I9H01143; I9H01172; I9H01173; I9H01269; I9H01375; I9H01376; I9H01412; I9H01431; I9H01433	
15	21848055	VERDICHTER		XXX3121X	
	41768031	VERDICHTER		XX1117X	
	10210943	VERDICHTER		XX2X1121X	
	41768035	VERDICHTER		XX1118XX	
	10210989	VERDICHTER		I9800018; I9800092	
16	42560031	FANMOTOR 12W 1500RPM			
	10220093	MOTOR 14/8W 115V/50-60HZ			
17	10407021	FAN BLADE Ø200 34°		FOR MOTOR I0220093	
18	44764000	DEHYDRATE FILTER 44764000			
	10145086	DEHYDRATE FILTER 10145086		I9800018; I9800092	
19	10403007	DAMPER RUBBER BLACK			
20	10130108	SPYRAL CONDENSER 118X210X125			
21	10225190	THERMOSTAT			
	10225192	THERMOSTAT		I9H00698; I9H00699; I9H00700; I9H00723; I9H00724; I9H00725; I9H00726; I9H00735; I9H00808; I9H00809; I9H00891; I9H00961	
	10225199	THERMOSTAT		I9800018; I9800092	
22	10413010	KNOB GRAU		WITH THERMOSTAT I0225190; I0225192	
23	10406005	THERMOMETER BLACK			
	10406040	THERMOMETER WHITE			

Ref.	Code	Description	Characteristic Note	Q.ty x Pack Statement
24	54303031	CORK GREY		
	54303032	CORK WHITE		
	54303033	CORK BLACK		
25	I0402018	WHEEL Ø50		
	I0402019	WHEEL WITH BRAKE Ø50		
	I0402069	WHEEL Ø35	I9800018; I9800092	
26	50025031	REGLER		
27	50082031	NTC FUHLER L.1000		
28	I3300524	KABEL-VERSORGUNG L.2500 SCHUKO SCHWEIZ		
	I3301531	KABEL-VERSORGUNG L.4000 SCHUKO STECKER		
	I3302607	KABEL-VERSORGUNG L.4000 ISRAEL STECKER		
	I3303163	SUPPLY CABLE L.4200 SCHUKO PLUG		
	I3306036	KABEL-VERSORGUNG L.2500 U.S.A. STECKER		
	I3306470	KABEL-VERSORGUNG L.2500 SCHUKO STECKER		
	I3306480	KABEL-VERSORGUNG L.2500 ITALIEN STECKER		
	I3306486	KABEL-VERSORGUNG L.2500 UK STECKER		
29	I3305738	VORSCHALTGERAT 12W 24V		
30	50489000	WELL DIVIDER (3 SECTORS) 342X365 WHITE		
	50597000	WELL DIVIDER (3 SECTORS) 237X365 WHITE		
31	50490000	WELL DIVIDER (6 SECTORS) 229X365 WHITE		
	50598000	WELL DIVIDER (6 SECTORS) 159X365 WHITE		
32	49659000	CHEST WHITE		

Ref.	Code	Description	Characteristic Note	Q.ty x Pack Statement
1	50501031	SOPORTE LAMPARA		
2	50496031	COBERTURA SOPORTE LAMPARA		
3	54849000	LAMPARA L.70 2W 6500K	REEMPLAZA TAMBIÉN LA LAMPARA LED DE 1W	
4	44246046	TAPA Ø576	I9H00722	
	44246048	TAPA Ø576	I9H00738	
	44261000	TAPA Ø576	I9H00105; I9H00870; I9H01046	
	44422000	TAPA Ø576	I9H00231; I9H00236; I9H00337; I9H00504; I9H00506; I9H00574; I9H00628; I9H00629; I9H00630; I9H00815	
	44549000	TAPA Ø576	I9H00237; I9H00505	
	44559000	TAPA Ø576	I9H00238; I9H00626	
	46511000	TAPA Ø576	I9H00338	
	50122035	TAPA Ø429	I9H00726	
	50128000	TAPA Ø429	I9H00724	
	51016000	TAPA Ø576	I9H00695	
	51041000	TAPA Ø429	I9H00699	
	51064000	TAPA Ø576	I9H00696	
	51074000	TAPA Ø429	I9H01087	
	51188000	TAPA Ø576	I9H00697	
	51193000	TAPA Ø429	I9H00725	
	51228000	TAPA Ø429	I9H00700	
	51234000	TAPA Ø429	I9H00698	
	51350000	TAPA Ø429	I9H00723	
	51472031	TAPA Ø429	I9H00735	
	51556000	TAPA Ø576	I9H00627	
	52289000	TAPA Ø576	I9H00814	
	52642000	TAPA Ø429	I9H00809	
	52962000	TAPA Ø429	I9H00891	
	53004000	TAPA Ø576	I9H00893	
	53013000	TAPA Ø576	I9H00894	
	53078000	TAPA Ø576	I9H00895	
	53768031	TAPA Ø429	I9H00961	
	55365000	TAPA Ø576	I9H01083; I9H01314	
	56231000	TAPA Ø576	I9H01086	
	56432000	TAPA Ø429	I9H01135	
	56463000	TAPA Ø429	I9H01134; I9H01269; I9H01375; I9H01376; I9H01412	



Ref.	Code	Description	Characteristic	Note	Q.ty x Pack	Statement	
4	56480000	TAPA Ø429		I9H01088			
	56630000	TAPA Ø576		I9H01142; I9H01178			
	56651000	TAPA Ø576		I9H01156			
	56916000	TAPA Ø429		I9H01143			
	56974000	TAPA Ø429		I9H01172			
	56985000	TAPA Ø429		I9H01173			
	57139000	TAPA Ø429		I9H01179			
	58213000	TAPA Ø576		I9H01291; I9H01315; I9H01377; I9H01413; I9H01514			
	58410000	TAPA Ø429		I9H01170			
	58433032	TAPA Ø576		I9H01169			
	58433034	TAPA Ø576		I9H01541			
	58478000	TAPA Ø429		I9H01287			
	58518000	TAPA Ø576		I9H01288			
	58888000	TAPA Ø429		I9H01346			
	59031000	TAPA Ø576		I9H01347			
	59122000	TAPA Ø576		I9H01373			
	59264000	TAPA Ø576		I9H01268			
	59842000	TAPA Ø429		I9H01433			
	60184000	TAPA Ø429		I9H01431			
	60193000	TAPA Ø576		I9H01432			
	60974000	TAPA Ø576		I9H01515			
	61229000	TAPA Ø576		I9H01536			
	50721000	TAPA Ø576		I9H00575			
	52248032	TAPA Ø429		I9H00808			
	57488000	TAPA Ø576		I9H01222			
	61375000	TAPA Ø429		I9H01221			
	45733000	TAPA Ø576		I9H00314			
	44462000	TAPA Ø576		I9H00233; I9H00624; I9H00892			
	44487000	TAPA Ø576		I9H00232			
	10250529	HEMI-TAPA Ø381		I9800018; I9800092			
	5	56180000	DECAL		I9H01087		
		56436000	DECAL		I9H01135		
56460000		DECAL		I9H01134; I9H01269; I9H01375; I9H01376; I9H01412			
56482000		DECAL		I9H01088			

Ref.	Code	Description	Characteristic	Note	Q.ty x Pack	Statement
5	56918033	DECAL		I9H01143		
	56977033	DECAL		I9H01172		
	56986033	DECAL		I9H01173		
	57140033	DECAL		I9H01179		
	58409033	DECAL		I9H01170		
	58476033	DECAL		I9H01287		
	58889033	DECAL		I9H01346		
	59838033	DECAL		I9H01433		
	60183033	DECAL		I9H01431		
6	I3303102	MANILLA				
7	I0431241	SOPORTE BLOQUE TAPA				
8	56119000	CERRADURA				
9	55348000	MATA INF. RAL9005				
10	54702000	MATA SUP. RAL9005				
11	50131031	JUNTA Ø429 GRIS				
	50131032	JUNTA Ø429 NEGRO				
	50131033	JUNTA Ø429 BLANCO				
	50131034	JUNTA Ø576 BLANCO				
	50131035	JUNTA Ø576 GRIS				
	50131036	JUNTA Ø576 NEGRO				
	I3305453	JUNTA		I9800018; I9800092		
12	54714000	INSERTO RAL9005				
13	44238031	PARILLA ANT. 306X222 BLANCO		I9H00105; I9H00232; I9H00233; I9H00314; I9H00624; I9H00695; I9H00696; I9H00697; I9H00722; I9H00870; I9H00892; I9H01046; I9H00231; I9H00236; I9H00337; I9H00338; I9H00504; I9H00506;		
	44238032	PARILLA ANT. 306X222 GRIS		I9H00574; I9H00575; I9H00628; I9H00629; I9H00630; I9H00815; I9H00895; I9H00237; I9H00238; I9H00341; I9H00503; I9H00505; I9H00573;		
	44238033	PARILLA ANT. 306X222 NEGRO		I9H00576; I9H00625; I9H00626; I9H00627; I9H00738; I9H00814;		
	44238034	PARILLA ANT. 306X222 GRIS		I9H01142; I9H01178; I9H01222; I9H01347; I9H01373; I9H01536		
	44238035	PARILLA ANT. 306X222 NEGRO		I9H01086; I9H01156; I9H01268; I9H01291; I9H01315; I9H01377; I9H01413; I9H01432; I9H01514		
	50056031	PARILLA ANT. 237X222 GRIS		I9H00724; I9H00725		
	50056033	PARILLA ANT. 237X222 NEGRO		I9H00699; I9H00723; I9H00726; I9H00735; I9H00808; I9H00961		
	50056035	PARILLA ANT. 237X222 BLANCO		I9H00698; I9H00700; I9H00809; I9H00891		
	53833031	PARILLA ANT. 306X222 BLANCO		I9H01083; I9H01169; I9H01288; I9H01314; I9H01515; I9H01541		
	53833033	PARILLA ANT. 237X222 BLANCO		I9H01170; I9H01287		
	53833037	PARILLA ANT. 237X222 GRIS		I9H01179; I9H01346; I9H01221		

Ref.	Code	Description	Characteristic	Note	Q.ty x Pack	Statement
13	53833039	PARILLA ANT. 237X222 NEGRO		I9H01087; I9H01088; I9H01134; I9H01135; I9H01143; I9H01172; I9H01173; I9H01269; I9H01375; I9H01376; I9H01412; I9H01431; I9H01433;		
14	44240031	PARILLA TRAS. 306X222 BLANCO		I9H00105; I9H00232; I9H00233; I9H00314; I9H00624; I9H00695; I9H00696; I9H00697; I9H00722; I9H00870; I9H00892; I9H01046;		
	44240032	PARILLA TRAS. 306X222 GRIS		I9H00231; I9H00236; I9H00337; I9H00338; I9H00504; I9H00506; I9H00574; I9H00575; I9H00628; I9H00629; I9H00630; I9H00815; I9H00895;		
	44240033	PARILLA TRAS. 306X222 NEGRO		I9H00237; I9H00238; I9H00341; I9H00503; I9H00505; I9H00573; I9H00576; I9H00625; I9H00626; I9H00627; I9H00738; I9H00814;		
	50056032	PARILLA TRAS. 237X222 GRIS		I9H00724; I9H00725		
	50056034	PARILLA TRAS. 237X222 NEGRO		I9H00699; I9H00723; I9H00726; I9H00735; I9H00808; I9H00961		
	50056036	PARILLA TRAS. 237X222 BLANCO		I9H00700; I9H00698; I9H00809; I9H00891		
	53833032	PARILLA TRAS. 306X222 BLANCO		I9H01083; I9H01169; I9H01288; I9H01314; I9H01515; I9H01541		
	53833034	PARILLA TRAS. 237X222 BLANCO		I9H01170; I9H01287		
	53833035	PARILLA TRAS. 306X222 GRIS		I9H01142; I9H01178; I9H01222; I9H01347; I9H01373; I9H01536		
	53833036	PARILLA TRAS. 306X222 NEGRO		I9H01086; I9H01156; I9H01268; I9H01291; I9H01315; I9H01377; I9H01413; I9H01432; I9H01514		
	53833038	PARILLA TRAS. 237X222 GRIS		I9H01179; I9H01346; I9H01221		
	53833040	PARILLA TRAS. 237X222 NEGRO		I9H01087; I9H01088; I9H01134; I9H01135; I9H01143; I9H01172; I9H01173; I9H01269; I9H01375; I9H01376; I9H01412; I9H01431; I9H01433;		
15	21848055	COMPRESOR		XXX3121X		
	41768031	COMPRESOR		XX1117X		
	10210943	COMPRESOR		XX2X1121X		
	41768035	COMPRESOR		XX1118XX		
	10210989	COMPRESOR		I9800018; I9800092		
16	42560031	MOTOVENTILADOR 12W 1500RPM				
	10220093	MOTORE 14/8W 115V/50-60HZ				
17	10407021	VENTULA Ø200 34°		POR MOTOR 10220093		
18	44764000	FILTRO DESHIDRATADOR 44764000				
	10145086	FILTRO DESHIDRATADOR 10145086		I9800018; I9800092		
19	10403007	GOMINAS AMORTIGUADOR NEGRO				
20	10130108	CONDENSADOR ENVUELTO 118X210X125				
21	10225190	TERMOSTATO				
	10225192	TERMOSTATO		I9H00698; I9H00699; I9H00700; I9H00723; I9H00724; I9H00725; I9H00726; I9H00735; I9H00808; I9H00809; I9H00891; I9H00961		
	10225199	TERMOSTATO		I9800018; I9800092		
22	10413010	POMO GRIS		CON TERMOSTATO 10225190; 10225192		
23	10406005	TERMOMETRO NEGRO				
	10406040	TERMOMETRO BLANCO				

Ref.	Code	Description	Characteristic Note	Q.ty x Pack Statement
24	54303031	TAPA GRIS		
	54303032	TAPA BLANCO		
	54303033	TAPA NEGRO		
25	10402018	RUEDA Ø50		
	10402019	RUEDA CON FRENO Ø50		
	10402069	RUEDA Ø35	19800018; 19800092	
26	50025031	CONTROLADOR		
27	50082031	SONDA NTC L.1000		
28	I3300524	CABLE ALIMENTACION L.2500 ESPINA SUIZA		
	I3301531	CABLE ALIMENTACION L.4000 ESPINA SCHUKO		
	I3302607	CABLE ALIMENTACION L.4000 ESPINA ISRAEL		
	I3303163	CABLE ALIMENTACION L.4200 ESPINA SCHUKO		
	I3306036	CABLE ALIMENTACION L.2500 ESPINA U.S.A.		
	I3306470	CABLE ALIMENTACION L.2500 ESPINA SCHUKO		
	I3306480	CABLE ALIMENTACION L.2500 ESPINA ITALIA		
	I3306486	CABLE ALIMENTACION L.2500 ESPINA UK		
29	I3305738	ALIMENTACION 12W 24V		
30	50489000	SEPARADOR CUVE (3 SECTORES) 342X365 BLANCO		
	50597000	SEPARADOR CUVE (3 SECTORES) 237X365 BLANCO		
31	50490000	SEPARADOR CUVE (6 SECTORES) 229X365 BLANCO		
	50598000	SEPARADOR CUVE (6 SECTORES) 159X365 BLANCO		
32	49659000	CESTA BLANCO		



# Epta

Advanced Solutions for your Store

Follow us on:      by Epta