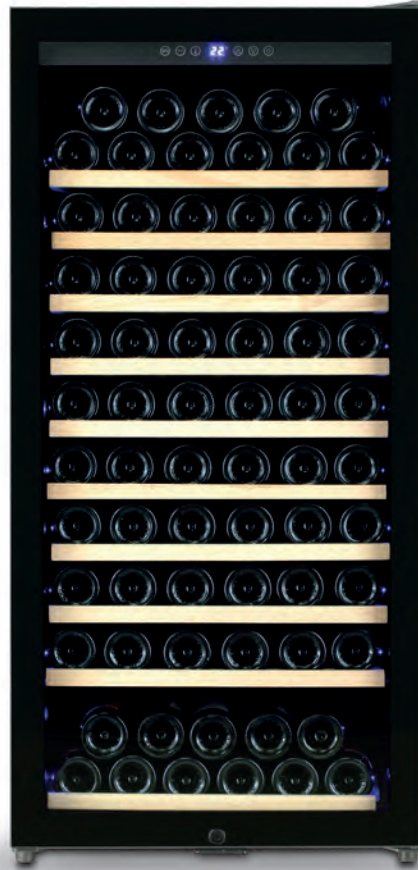




COOLERS

SCARLET 298

PLUG-IN AND SWITCH ON YOUR BUSINESS!





eptarefrigeration

wine COOLERS

SCARLET 298

PLUG-IN AND SWITCH ON YOUR BUSINESS!

Temperatura Singola / Single Temperature
+5°C ÷ +22°C

Dimensioni Mobile (mm)
Cabinet Dimensions (mm)

Larghezza / Width : 598
Profondità / Depth : 705
Altezza / Height : 1210

Volume Netto (Lt)
Net Volume (Lt)
285

Capacità Bottiglie Bordelesi (0.75 Lt)
Bordeaux Bottles Capacity (0.75 Lt)
110

Ripiani in Legno
Wood Shelves
9 + 1

Refrigerazione
Cooling System
Ventilata / Ventilated

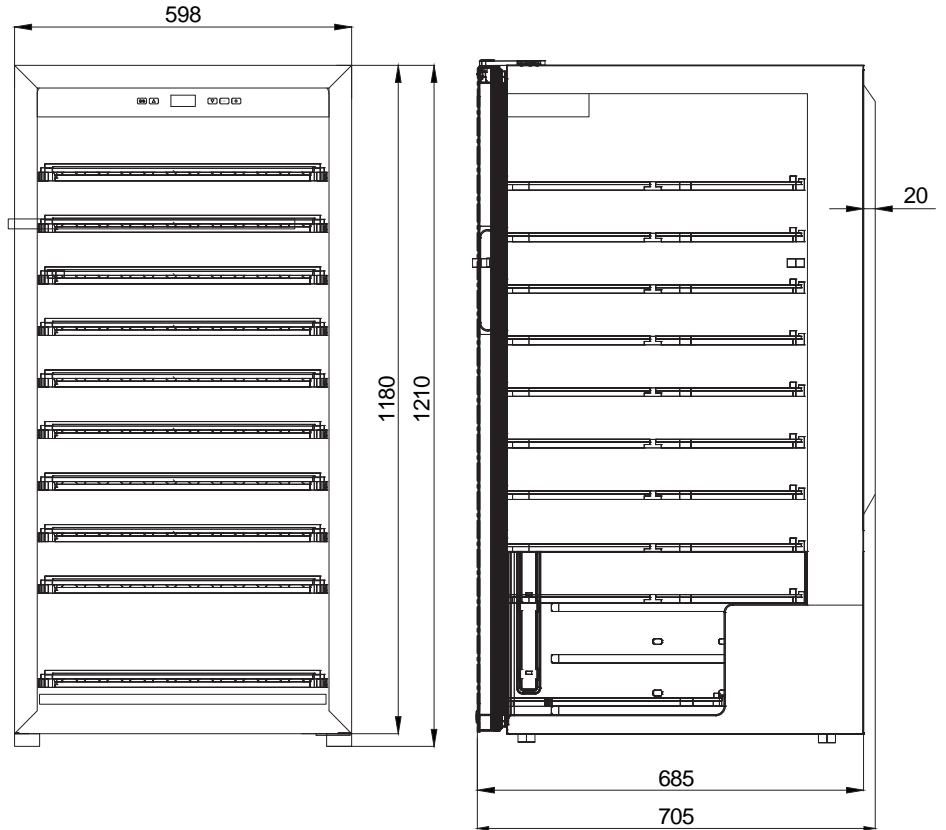
Gas Refrigerante
Refrigerant Gas
R600a

Peso Lordo / Netto (Kg)
Gross / Net Weight (Kg)
77 - 69

Dimensioni Imballo (mm)
Packaging Dimensions (mm)
Larghezza / Width : 655
Profondità / Depth : 780
Altezza / Height : 1300

Carico
Loading

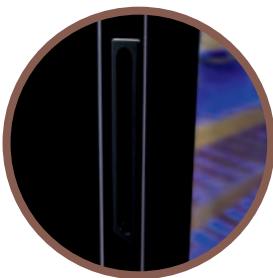
Container 20" (ft) : 23
Container 40" (ft) : 48
Container 40" HQ (ft) : 96



CONTROLLORE ELETTRONICO /
ELECTRONIC CONTROLLER



9 + 1 RIPIANI IN LEGNO /
9 + 1 WOOD SHELVES



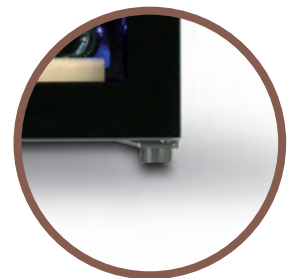
MANIGLIA INCASSATA /
HANDLE



CHIUSURA A CHIAVE /
LOCKING SYSTEM



INTERNAL BLUE LED LIGHTS



4 PIEDINI /
4 ADJUSTABLE FEETS

Follow us on:



by Epta

PLUG-IN AND SWITCH ON YOUR BUSINESS!



EPTA SpA - Unità Locale CASALE MONFERRATO (AL) - via Achille Grandi, 43 - 15033 - Tel. +39 0142 436111 - Fax +39 0142 781540

www.iarp-plugin.com